



Quick Start Guide

for

The Internet and Computing Benchmark®

and

Internet and Computing Mentor®

This Quick Start Guide provides the new user with a step by step approach to using the Internet and Computing Benchmark® and Internet and Computing Mentor®.

- ▶ The following describes the technical requirements for desktop or laptop workstations supporting the use of the Internet and Computing Benchmark® and Internet and Computing Mentor®

User Workstation Technical Requirements

Windows

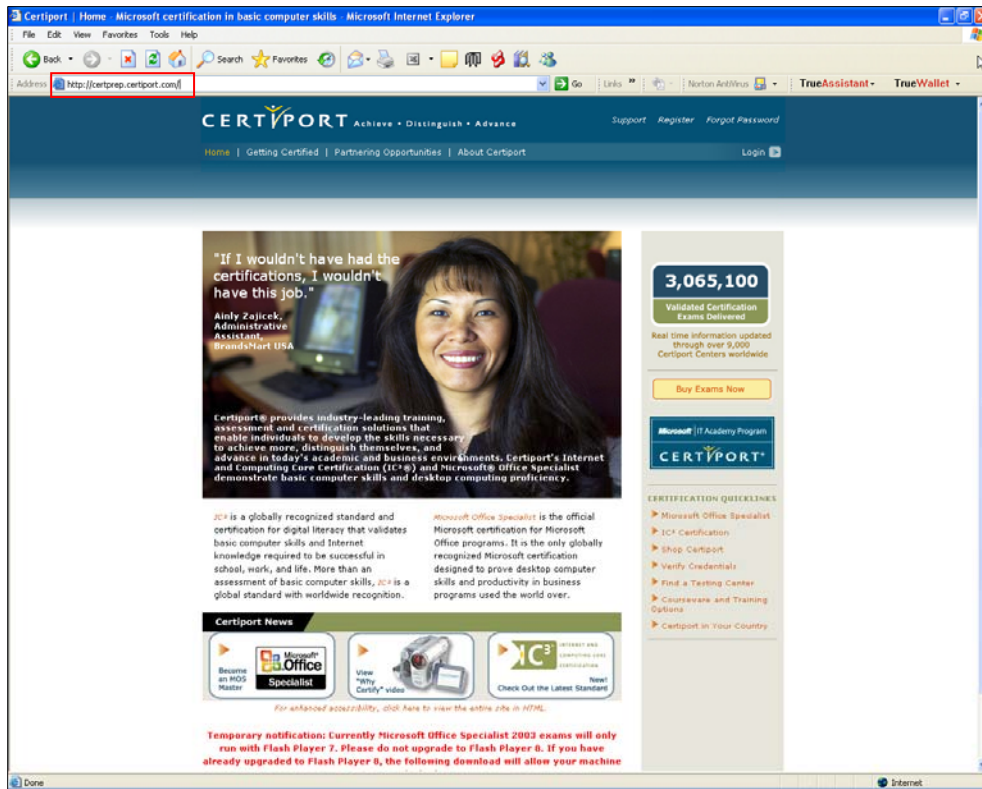
O/S Versions	Windows 2000 and XP (all versions w/latest updates)
Display	1024x768, 256 color minimum
RAM Memory	256MB
Disk Memory	N/A
Processor	Pentium III, 750MHz or better
Input Devices	Keyboard, Mouse
Browser	Internet Explorer 6.0 or better Firefox 1.0.7 or better Adobe/Macromedia Flash Plug-in 7.0 or better
	Enable: cookies, Java applets
	Disable: Popup blockers and browser add-ins such as Google or Yahoo tool bars
Internet Connection	156Kbits/Second or better

Mac OS X Tiger

O/S Versions	Mac OS X 10.4.3
Display	1024x768, 256 color minimum
RAM Memory	256MB
Disk Memory	N/A
Processor	400MHz or better
Input Devices	Keyboard, Mouse
Browser	Safari 2.0 or better Firefox 1.5 or better Adobe/Macromedia Flash Plug-in 8.0 or better
	Enable: cookies
	Disable: Popup blockers and browser add-ins such as Google or Yahoo tool bars
Internet Connection	156Kbits/Second or better



- To access the Benchmark and/or Mentor Assessments, please:
Go to <http://certprep.certport.com> with your web browser



- Enter your user name and password.

Your User Name Follows

Enter your User Name Step 1

Enter your user Password Step 2

Press the Login button Step 3

Your Password Follows



- ▶ If this is your first time logging in you will be prompted for a new password and to enter some additional security information.

Type a new Password Step 1

Type your new Password a second time to verify it Your password must be 6 characters long. Alphabetic and numeric characters are allowed. Step 2

Then click Save Step 3

- ▶ After you are logged in select the *My Pathway* tab from the Main page. You will be presented Assessments available to you from the Certiport Pathway Catalog.

Click My Pathway to see your courses

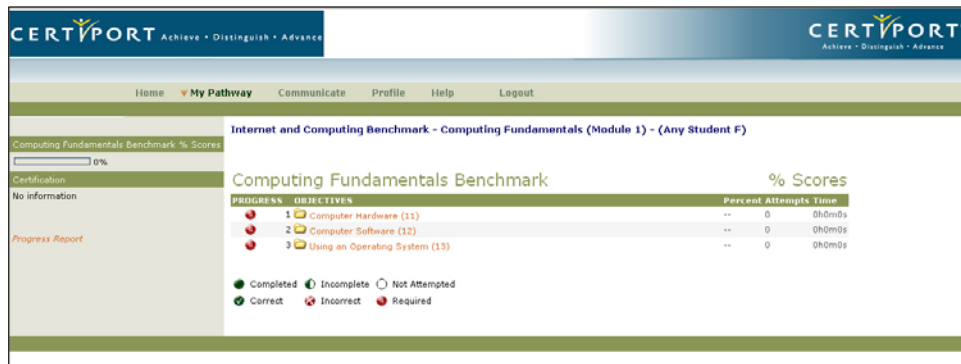


- ▶ Select from the list of Assessments by clicking on **Enter**.



NOTE: The Benchmark contains 3 Modules, Computing Fundamentals, Key Applications and Living Online.

- ▶ A list of required objectives within the selected Module will appear, similar to the example below. Select an Objective by clicking on the objective title.



NOTE: You must complete all the objectives within a module before the Module is complete.



- ▶ You will now see a list of training objectives specific to your previous selection. The display will now look similar to the example below. Select a training objective that is still required by clicking on the objective title.

PROGRESS	OBJECTIVES	Percent	Attempts	Time
<input type="checkbox"/>	1 Identify types of computers, how they process information and how individual computers interact with other computing systems and devices (111)	--	0	0h0m0s
<input type="checkbox"/>	2 Identify the function of computer hardware components (112)	--	0	0h0m0s
<input type="checkbox"/>	3 Identify the factors that go into an individual or organizational decision on how to purchase computer equipment (113)	--	0	0h0m0s
<input type="checkbox"/>	4 Identify how to maintain computer equipment and solve common problems relating to computer hardware (114)	--	0	0h0m0s







- ▶ The specific questions for that Objective will now be displayed as shown below. Select a question by clicking on **PLAY** at the end of the sentence. This will launch the Benchmark / Mentor and the question will be available for you to answer. The remaining questions will automatically be displayed after each one is answered.

PROGRESS	OBJECTIVES	Percent	Attempts	Time
<input type="checkbox"/>	1 Categorize types of computers based on their size, power and purpose (11101) Play	--	0	0h0m0s
<input type="checkbox"/>	2 Identify types of microcomputers (11102) Play	--	0	0h0m0s
<input type="checkbox"/>	3 Identify other types of computing devices (11103) Play	--	0	0h0m0s
<input type="checkbox"/>	4 Identify the role of the central processing unit (11104) Play	--	0	0h0m0s
<input type="checkbox"/>	5 Identify how the speed of the microprocessor is measured (11105) Play	--	0	0h0m0s
<input type="checkbox"/>	6 Identify the role of types of memory and storage and the purpose of each (11106) Play	--	0	0h0m0s
<input type="checkbox"/>	7 Identify concepts related to how memory is measured (11107) Play	--	0	0h0m0s
<input type="checkbox"/>	8 Identify the flow of information between storage devices (such as floppy or hard disk) to the microprocessor and RAM in relation to everyday computer operations (11108) Play	--	0	0h0m0s
<input type="checkbox"/>	9 Identify the differences between large systems (such as mainframe or mini-computer systems with centralized data processing and storage) and desktop computers and appropriate uses for large vs. small systems. (11109) Play	--	0	0h0m0s
<input type="checkbox"/>	10 Identify that computers integrate into larger systems in a variety of ways (11110) Play	--	0	0h0m0s
<input type="checkbox"/>	11 Identify how computers share data, files, hardware and software (11111) Play	--	0	0h0m0s

Note: You can exit the Assessment at any point in time after you respond to a question and you will be returned to that point the next time you log in.



Note: The meaning of the symbols on the previous three image frames is as follows:

-  Completed
Indicates that the item or group of items has been successfully
-  Incomplete
Indicates that the item or group of items has been started, but not
-  Not Attempted
Indicates that the item or group has not been
-  Correct
Indicates that this question was answered
-  Incorrect
Indicates that this question was answered
-  Required
Indicates that the item or group must be attempted to complete this

For assistance, please contact Certiport Customer Support:

1-888-222-7890